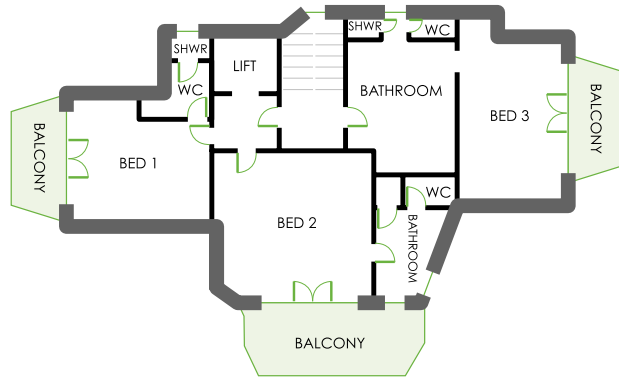
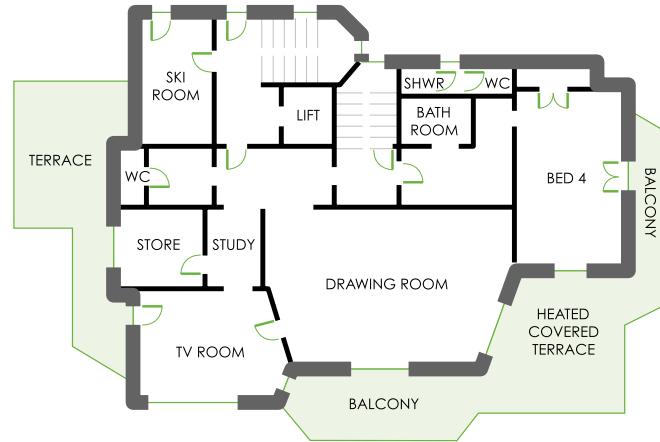


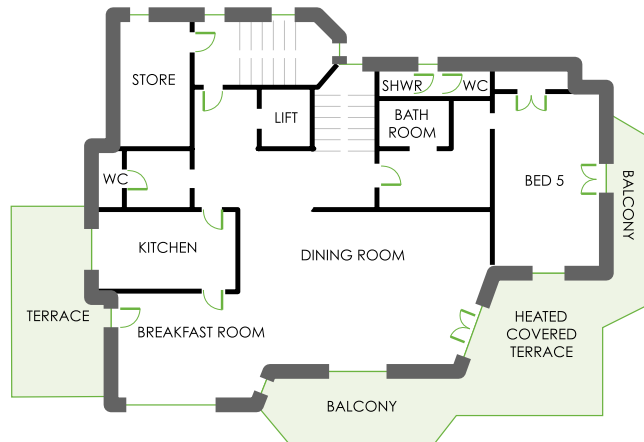
## 2ND FLOOR



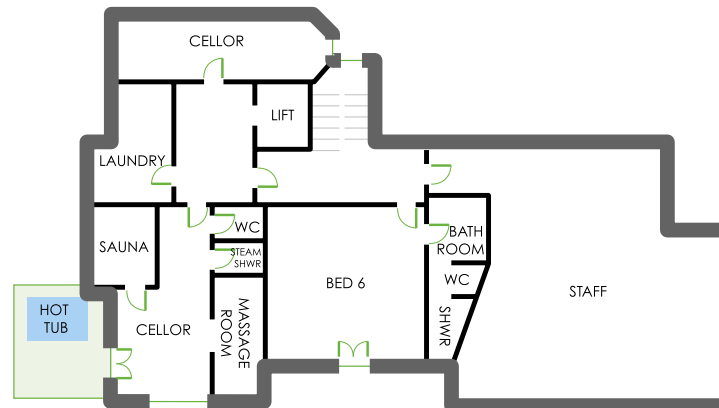
## 1ST FLOOR



## GROUND FLOOR



## LOWER GROUND FLOOR



## ACCOMMODATION

MAXIMUM GUESTS: 12  
LIVING AREA: 480 m<sup>2</sup>  
STAFF: 6

**BEDROOM 1** - Twin or superking size bcd with ensuite shower room and private balcony.

**BEDROOM 2** - Twin or superking size bed with ensuite bathroom, separate shower, fireplace and private south facing balcony.

**BEDROOM 3** - Twin or superking size bed with ensuite bathroom, separate shower and private balcony.

**BEDROOM 4** - Twin or superking size bed with ensuite bathroom, separate shower and private balcony.

**BEDROOM 5** - Twin or superking size bcd with ensuite bathroom, separate shower and private terrace.

**BEDROOM 6** - Twin or superking size bcd with ensuite bathroom, separate shower and south facing terrace.

### INFANTS COTS

All bedrooms are suitable for cots.

### PRIVACY

Chesa Falcun is located in a small group of private chalets and boasts a covered entrance for total privacy.

### ACCESS

Ski across the open snow field direct to the village or stroll down to the centre in just over ten minutes. Alternatively the shops, bars and the Gotschna lift are only a three minute chauffeured drive away.

### FACILITIES

- Covered outdoor hot-tub
- Sauna
- Steam shower
- Massage room
- Lift access to all floors
- Heated covered terrace
- TV with flat screen television with satellite channels and DVD player
- Ski room with heated boot racks
- A La Carte wine list
- Nespresso machine
- 2 chauffeured 4x4's
- Toys, sledges, games, books, CDs, DVDs and videos
- South facing balconies and terraces
- iPod docking station
- Vercina Spa access

### CREATURE COMFORTS

- Feather (or hypo-allergenic) pillows and duvets
- Personal bathrobes and slippers
- A hairdryer in every bathroom
- Jo Malone bathroom products
- Fresh flowers and daily newspapers

### COMMUNICATIONS

- Study with telephone and fax
- Computer with wireless broadband network